


The Linguistic Representation of The Crime Phenomenon in Criminal Literary Discourse Through A Cognitive Study

 Solijon Azizov

Doctor of Philosophy (PhD) in Pedagogical Sciences, Uzbekistan State World Languages University, Tashkent, Uzbekistan

Received: 20 March 2026 Accepted: 12 April 2026 Published: 30 April 2026

ABSTRACT

This article examines the linguistic representation of the crime phenomenon in criminal literary discourse through a cognitive and discourse-based framework. The study was motivated by the view that crime fiction is not merely a popular literary genre, but a complex communicative system in which language organizes suspense, suspicion, interpretation, and explanatory closure. Although crime fiction has been widely studied from historical and narrative perspectives, less attention has been given to the linguistic mechanisms through which crime itself is verbalized and cognitively processed. Therefore, the main aim of the study was to identify how crime is constructed through lexical-semantic, pragmatic, and narrative strategies, as well as how readers are guided toward interpretation under conditions of uncertainty.

To achieve this aim, the study focused on five objectives: (1) to determine linguistic forms of crime representation; (2) to identify lexical-semantic resources related to criminality; (3) to analyze pragmatic strategies of concealment and suspicion; (4) to examine cognitive mechanisms of reader inference; and (5) to describe discourse procedures through which hidden events are reconstructed. Methodologically, the research employed a qualitative descriptive-analytical design integrating discourse analysis, lexical semantics, pragmatics, cognitive linguistics, and narratology.

The findings demonstrate that crime in literary discourse is represented through both direct and indirect linguistic means. Direct forms include lexical units such as murder, theft, suspect, and evidence, while indirect forms rely on fear, secrecy, contradiction, silence, and abnormal behavior. The results also reveal stable lexical-semantic fields including violence, investigation, suspicion, motive, concealment, and judgment. Pragmatic analysis showed that hesitation, evasion, over-explanation, and strategic silence frequently function as markers of hidden guilt. Furthermore, readers are cognitively positioned as co-investigators who construct and revise hypotheses while interpreting fragmented events.

In conclusion, criminal literary discourse should be understood as a language-based system that transforms concealed actions into meaningful narrative reality. The study contributes to literary discourse research by offering an integrated semantic, pragmatic, cognitive, and narratological model for the analysis of crime fiction.

Keywords: Criminal literary discourse, crime fiction, linguistic representation, cognitive analysis, lexical-semantic fields, pragmatics, suspicion, narrative structure, reader inference, discourse analysis.

INTRODUCTION

Crime fiction has become one of the most enduring and internationally recognizable literary traditions, maintaining relevance across different historical periods, media forms, and linguistic communities. From

nineteenth-century detective narratives to contemporary psychological thrillers and forensic novels, texts structured around crime continue to attract broad scholarly and popular attention. Their longevity is not accidental. Crime narratives combine suspense, rational inquiry, ethical

conflict, and emotional intensity in ways that allow readers simultaneously to experience anxiety and resolution. As Priestman observes, crime fiction has repeatedly reinvented itself while preserving a central concern with disorder and its interpretation (Priestman, 2003).

The appeal of crime narratives also derives from their close relationship with social consciousness. Literary representations of crime often emerge in periods marked by institutional change, urbanization, class tension, or moral uncertainty. Worthington notes that crime fiction reflects the fears and priorities of the societies in which it is produced, especially attitudes toward authority, deviance, and justice (Worthington, 2011). Consequently, fictional crime is rarely limited to an isolated illegal act; it frequently symbolizes broader anxieties regarding family breakdown, corruption, economic pressure, violence, secrecy, or declining trust in institutions.

Criminal Literary Discourse as a Linguistic Phenomenon

Although commonly categorized as popular literature, crime fiction increasingly occupies a serious place in literary and cultural studies. Scaggs argues that modern crime fiction is best understood as a dynamic genre that absorbs and reworks elements from realism, gothic fiction, modernism, postmodernism, and political writing (Scaggs, 2005). This flexibility explains why criminal literary discourse remains analytically productive. It is not a rigid formula but an adaptable narrative mode capable of expressing changing forms of fear, guilt, surveillance, and social fragmentation.

Additionally, one of the most persistent methodological problems in the analysis of literary discourse is the tendency to equate it with the text itself. This approach treats a literary work as a collection of grammatical and stylistic units, thereby limiting the real communicative existence of discourse. In fact, literary discourse does not end with its written form; rather, it is shaped within a complex semantic field where authorial intention, strategies of speech organization, and reader perception intersect. Therefore, the analysis of literary discourse should not be confined solely to describing linguistic structures, but must also include how meaning is generated, managed, and interpreted (Azizov, 2026a).

From a linguistic standpoint, crime in literature is not simply reported through language; it is discursively

constructed by language. The identities of criminal, victim, witness, investigator, and suspect emerge through naming practices, evaluative vocabulary, speech patterns, and narrative framing. Fairclough defines discourse as language used as a form of social practice, emphasizing that texts both reflect and shape social realities (Fairclough, 2013). Applied to crime fiction, this means that narratives do not neutrally mirror criminality. Rather, they organize how readers understand violence, responsibility, motive, and evidence.

The discourse of crime fiction is especially dependent on selective information management. In many narratives, readers are denied full access to relevant facts until the final stages of the text. Suspicion is distributed unevenly among characters, motives remain partially hidden, and apparently trivial details later become decisive evidence. Hühn remarks that detective narratives derive much of their force from the strategic arrangement of knowledge and ignorance between narrator, characters, and reader (Hühn, 1987). Thus, the linguistic architecture of concealment is central to criminal literary discourse.

Cognitive Nature of Crime Narratives

A cognitive perspective further clarifies how such texts function. Van Dijk proposes that discourse comprehension depends on mental models through which readers interpret events, infer intentions, and evaluate participants (van Dijk, 2008). Crime fiction activates these processes continuously. Readers construct provisional scenarios, compare competing explanations, revise judgments after new clues, and monitor contradictions in testimony. Reading becomes a dynamic inferential process rather than passive reception.

Besides, a cognitive-discursive analysis conducted on the basis of the criminal-detective genre demonstrates that the meaning of a literary text is formed not as a mere collection of individual words, but as the result of the interaction of cognitive categories such as concept, frame, and script. The concept establishes the general semantic center, the frame activates the knowledge model necessary for understanding this center, while the script ensures the sequential development of events (Azizov, 2026b).

This cognitive engagement is one reason crime fiction differs from many other narrative genres. In romance or adventure fiction, anticipation often concerns future action. In criminal narratives, anticipation frequently concerns

hidden past action: what happened, who acted, why it occurred, and how it was concealed. Todorov famously described detective fiction as containing two stories – the story of the crime and the story of the investigation (Todorov, 1977). The first story is absent, fragmented, or distorted; the second gradually reconstructs it. This dual structure creates a unique narrative temporality based on retrospection.

Language is therefore required to perform multiple simultaneous functions in criminal literary discourse. It must narrate present investigation while indirectly encoding past events. It must describe characters while also misleading readers about them. It must reveal clues without making solutions obvious. It must sustain ambiguity while preserving eventual coherence. Thomas has shown that detective fiction historically developed alongside broader cultural interest in reading hidden signs and decoding identity (Thomas, 1999). Crime fiction may thus be viewed as a literary technology of interpretation.

The lexical organization of crime fiction also deserves attention. Words such as murder, theft, poison, alibi, clue, witness, motive, confession, and guilt do not operate independently. They belong to recurring semantic networks that signal genre expectations and guide reader processing. Stylistically, these units often interact with emotionally charged vocabulary – fear, dread, panic, shame, revenge – as well as institutional terminology drawn from law, medicine, and policing. The result is a hybrid discourse combining everyday speech, technical language, and psychological evaluation.

Another important dimension concerns characterization. The criminal in literature is rarely only a lawbreaker; the figure may also represent secrecy, trauma, greed, obsession, alienation, or resistance to social norms. Similarly, the investigator may symbolize logic, state authority, moral conscience, or the reader's own desire for explanatory closure. Knight notes that detective fiction repeatedly redefines the detective figure according to changing historical expectations about knowledge and power (Knight, 2004). Character roles in crime fiction are therefore ideologically charged as well as narratively functional.

Research Gap

Despite extensive scholarship on the history and subgenres of crime fiction, relatively limited attention has been

devoted to the systematic linguistic representation of the crime phenomenon itself. Many studies privilege plot formulas, author studies, adaptation history, or socio-political readings. Less frequently explored are questions such as: How is crime lexicalized across narrative stages? How is guilt implied before confirmation? Which speech patterns trigger suspicion? How does narrative sequencing manipulate cognitive certainty? How do semantic choices frame crime as moral failure, psychological disturbance, or social symptom?

These questions are increasingly relevant in an era when public understandings of crime are shaped not only by legal discourse and journalism but also by streaming media, serialized narratives, podcasts, and transnational fiction. Literary crime discourse participates in wider cultural conversations about surveillance, trauma, justice, victimhood, and truth. Studying its linguistic mechanisms therefore contributes beyond literary criticism to discourse studies, cultural linguistics, and narrative psychology.

The present article addresses this gap by examining how the phenomenon of crime is linguistically represented in criminal literary discourse through a cognitive framework. The study aims to identify the lexical-semantic resources through which crime is verbalized, analyze pragmatic strategies of concealment and accusation, explore the mental models activated in readers, and describe the discourse mechanisms by which fragmented events are reconstructed into intelligible truth. It is argued that crime fiction should be understood not merely as storytelling about unlawful acts, but as a sophisticated linguistic system that organizes uncertainty, suspicion, and explanatory desire.

Research Questions

This study addresses the following research questions:

1. How is the phenomenon of crime linguistically represented in criminal literary discourse?
2. What lexical-semantic resources are used to construct crime in literary texts?
3. Which pragmatic strategies create suspicion and concealment?
4. How are readers cognitively guided toward interpretation?

5. What discourse mechanisms reconstruct hidden criminal events?

METHODS

The present article employed a qualitative descriptive-analytical research design grounded in discourse studies, cognitive linguistics, pragmatics, and narratology. This methodological orientation was selected because the topic of the study – the linguistic representation of the crime phenomenon in criminal literary discourse – requires interpretation of meaning, communicative intention, and narrative structure rather than purely statistical measurement. Since crime fiction operates simultaneously through vocabulary, dialogue, concealment strategies, and reader inference, an interdisciplinary qualitative framework was considered the most appropriate for addressing the research questions formulated in the introduction.

The research corpus consisted of selected English-language crime fiction texts representing both classical detective tradition and modern criminal narratives. Texts were purposively chosen according to several criteria: (a) explicit focus on crime or investigation; (b) presence of hidden or gradually revealed criminal events; (c) rich use of dialogue and character interaction; (d) lexical density related to suspicion, motive, evidence, guilt, and concealment; and (e) relevance to the study of discourse mechanisms. Narrative descriptions, investigative episodes, and conversational exchanges were treated as primary units of analysis because these textual zones most clearly reveal how crime is linguistically constructed.

At the first analytical stage, a lexical-semantic analysis was conducted in order to identify recurrent vocabulary clusters used to verbalize crime. Words and expressions were grouped into semantic fields such as violence, secrecy, investigation, motive, judgment, punishment, and emotional reaction. Contextual meaning was prioritized over dictionary meaning so that lexical units could be interpreted according to their narrative function. This stage made it possible to determine how crime discourse relies on patterned vocabulary systems that guide reader expectations and genre recognition.

At the second stage, pragmatic and discourse-analytic procedures were applied to dialogues, narrator commentary, and sequential information flow. Particular attention was given to communicative deviations such as

hesitation, contradiction, evasion, implicature, over-explanation, indirect accusation, and strategic silence, since such features frequently generate suspicion in crime fiction. In parallel, a cognitive-narratological perspective was used to examine how readers are guided toward hypothesis formation, reassessment, and final interpretation through the controlled release of clues and competing explanations.

Finally, the reliability of interpretation was strengthened through iterative close reading and cross-validation across analytical levels. Findings from lexical, pragmatic, cognitive, and narratological stages were compared in order to identify recurring discourse patterns rather than isolated textual examples. Through this triangulated procedure, the study developed an integrated explanatory model showing how criminal literary discourse transforms fragmented events into meaningful representations of crime, guilt, and truth.

RESULTS

The findings of the present study are organized in accordance with the research questions introduced earlier. The analysis confirms that the phenomenon of crime in criminal literary discourse is not represented through isolated lexical items or single narrative incidents. Instead, crime emerges through an integrated system of semantic cues, pragmatic signals, conceptual oppositions, and narrative sequencing that gradually guides readers toward interpretation. In literary crime narratives, meaning is usually distributed across several layers of discourse rather than stated directly. As a result, readers identify criminality through patterns of language, deviations in communication, symbolic details, and delayed revelation.

The obtained results further indicate that crime fiction relies on a highly structured interpretive economy. Certain words activate expectations, certain conversational forms produce suspicion, and certain narrative structures invite inference. Therefore, crime in literary discourse should be viewed not merely as subject matter, but as a discursively organized cognitive experience.

Linguistic Representation of Crime in Criminal Literary Discourse (RQ1)

To answer the first research question, the study demonstrates that crime is linguistically represented through both direct and indirect verbal means. Direct

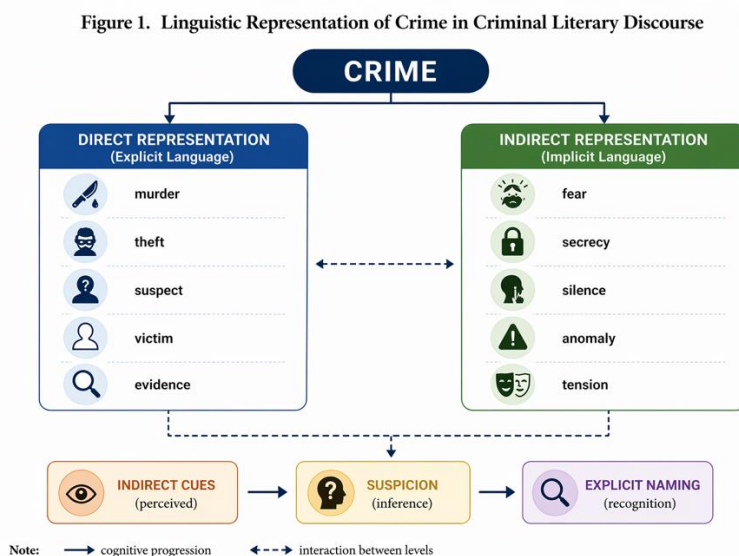
representation occurs when the text explicitly names unlawful actions, participants, or consequences through lexical units such as murder, theft, assault, blackmail, poison, victim, suspect, and evidence. These items immediately locate the narrative within a criminal frame and provide readers with genre recognition.

However, a substantial portion of crime representation in literary discourse is indirect. Many narratives postpone the explicit naming of crime and instead introduce abnormal circumstances that imply hidden wrongdoing. Such circumstances may include sudden fear, unexplained

absence, contradictory testimony, broken domestic routine, strange silence, concealed objects, or emotional overreaction. In these cases, readers begin to suspect crime before any legal term appears in the text.

This distinction is significant because it shows that literary crime is often cognitively prepared before it is verbally confirmed. Readers are first exposed to signals of disruption, and only later are these signals reinterpreted as evidence of criminal activity. Thus, language functions not only to label crime, but to create anticipatory awareness of it.

The two-level model may be summarized as follows (See Figure 1):



Another important result concerns grammatical realization. Crime is frequently expressed through nominalization (the murder, the disappearance, the attack), which objectifies the act and allows it to be discussed analytically. By contrast, verbal constructions (he killed, she stole, they concealed) foreground agency and responsibility. Literary texts strategically alternate between these forms depending on whether they wish to obscure or emphasize guilt.

Adjectival patterns also contribute to representation. Modifiers such as violent, deliberate, suspicious, brutal, accidental, or calculated shape interpretation before factual certainty is established. Therefore, linguistic representation of crime includes not only nouns and verbs, but evaluative framing through descriptive language.

The findings suggest that criminal literary discourse rarely

introduces crime neutrally. Even when facts remain unclear, lexical and grammatical choices already begin guiding readers toward specific emotional and moral interpretations.

Lexical-Semantic Fields Used to Construct Crime (RQ2)

Regarding the second research question, the analysis reveals that the concept of crime is constructed through stable lexical-semantic fields rather than isolated vocabulary. These fields create a recognizable linguistic environment in which criminal events become intelligible. Readers do not process each term separately; instead, they interpret clusters of related units that jointly activate expectations about danger, secrecy, investigation, and judgment.

Five dominant semantic zones were identified (See Figure 2):

Figure 2. Lexical-Semantic Fields Used to Construct Crime



The field of violence is often strongest at the beginning of narratives, especially when a body, disappearance, or visible damage introduces the central disturbance. Yet after the opening phase, the semantic field of suspicion tends to dominate. Terms such as motive, secret, and alibi redirect reader attention from what happened to why it happened and who is responsible.

The field of investigation functions differently. Unlike violence vocabulary, which emphasizes rupture, investigative vocabulary emphasizes order, method, and explanation. This contrast reflects a broader narrative movement from chaos toward interpretive control.

Another important finding is lexical overlap. Some words belong simultaneously to multiple semantic zones. For example, confession belongs to law, psychology, and morality; trace belongs to material evidence and symbolic memory; guilt may refer to legal culpability or emotional burden. This polyfunctionality enriches literary crime discourse and allows semantic ambiguity.

The results therefore confirm that the language of crime fiction is not random or decorative. It is organized through patterned lexical systems that regulate how readers

interpret criminal reality.

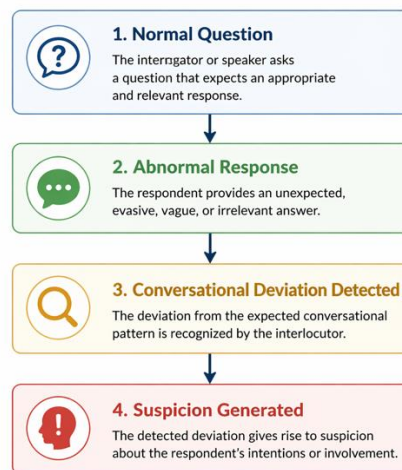
Pragmatic Strategies of Suspicion and Concealment (RQ3)

The third research question concerns pragmatic mechanisms through which suspicion and concealment are created. The findings indicate that many crime narratives rely less on explicit accusations than on conversational irregularities. Characters become suspicious not because others directly call them criminals, but because their communicative behavior appears inconsistent, defensive, or strategically incomplete.

The most recurrent pragmatic signals include: (a) answering a simple question with excessive detail; (b) avoiding direct response; (c) changing the subject abruptly; (d) contradicting previous statements; (e) speaking too calmly in a serious context; (f) emotional overreaction; (g) silence at expected moments. These signals are effective because readers apply everyday conversational expectations. When those expectations are violated, suspicion emerges. A short answer where explanation is expected may seem evasive, while a very long answer to a minor question may appear rehearsed.

The mechanism can be represented as (See Figure 3):

Figure 3. Pragmatic Mechanism of Suspicion Generation through Conversational Deviation



Another result concerns strategic silence. Silence in criminal literary discourse is rarely empty. Refusal to mention a person, hesitation before naming a place, or omission of a time detail may become stronger than direct speech. In many narratives, what is not said is as meaningful as what is spoken.

Indirect accusation is another common strategy. Instead of saying “You did it,” characters may ask targeted questions, mention specific times, or introduce forgotten details. This pragmatic pressure often leads suspects to reveal themselves through reaction rather than confession.

The study also found that politeness strategies can mask hostility. Civil conversation may conceal interrogation, and friendly dialogue may function as evidence gathering. Therefore, pragmatic interpretation is essential to understanding crime discourse.

Overall, the results show that suspicion in literary crime is

frequently a discourse effect produced through violated communicative norms rather than factual proof alone.

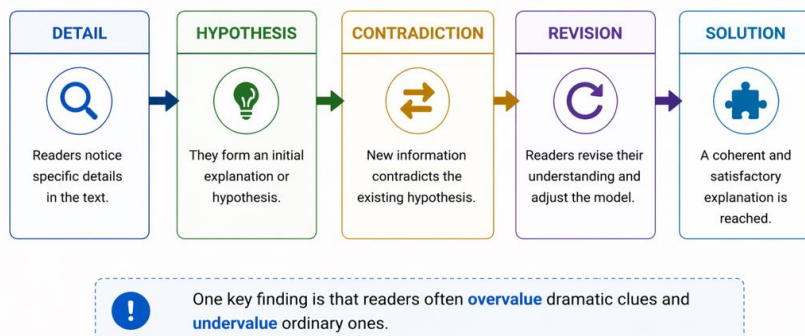
Cognitive Guidance of Readers during Interpretation (RQ4)

To address the fourth research question, the analysis demonstrates that readers are systematically guided into investigative cognition. Crime fiction does not simply provide a story to consume; it constructs a reasoning process that readers actively perform. Information is distributed in ways that encourage hypothesis formation, doubt, correction, and final synthesis.

Reader cognition commonly develops through the following stages: (1) noticing an unusual detail; (2) assigning provisional significance to it; (3) comparing it with later information; (4) revising earlier assumptions; (5) integrating clues into a coherent model.

This may be represented as (See Figure 4):

Figure 4. Integrating Clues into a Coherent Model



One key finding is that readers often overvalue dramatic clues and undervalue ordinary ones. Literary texts exploit this tendency by foregrounding sensational events while hiding decisive information in routine dialogue or domestic detail. Thus, cognition is shaped not only by what is present, but by attentional management.

Another important result concerns emotional cognition. Fear, sympathy, disgust, or admiration affect how readers assign suspicion. A pleasant character may be trusted too quickly, while an unpleasant one may be judged prematurely. Crime fiction repeatedly uses such biases to misdirect interpretation.

Temporal cognition is equally important. Readers reconstruct sequences: who knew what, who arrived when,

who had access, what changed after the event. Therefore, reading involves causal and chronological reasoning.

The findings confirm that criminal literary discourse transforms readers into co-investigators whose mental activity is necessary for narrative completion.

Narrative-Discursive Reconstruction of Hidden Events (RQ5)

The fifth research question concerns how hidden criminal events are reconstructed through discourse. The analysis shows that many crime narratives are built on split temporality: the central criminal act occurs before the main narration begins, while the text itself focuses on discovering that past event.

Three major models were identified (See Figure 5):

Figure 5. Narrative Models of Crime and Their Effects on Readers

Narrative Model	Description	Reader Effect
Hidden Crime Model	Offender concealed until ending	Puzzle-solving
Known Crime Model	Offender known, motive unresolved	Psychological tension
Fragmented Past Model	Crime disclosed gradually	Repeated reinterpretation

In the hidden crime model, readers lack access to the criminal identity and must interpret clues. In the known crime model, readers know the offender but remain engaged by questions of motive, method, or capture. In the

fragmented past model, testimony, memory, and evidence reveal the past in incomplete segments (See Figure 6):

Figure 6. Narrative Reconstruction Process from Past Events to Narrative Truth



Another finding is that chronology is often manipulated. Events may be narrated out of order, repeated from different perspectives, or reinterpreted after new evidence appears. Such restructuring creates epistemic instability: readers realize that knowing events is not the same as understanding them.

The study also found that final revelation scenes often reorganize all previous discourse retrospectively. Earlier remarks, gestures, silences, and details suddenly gain new meaning. This retroactive reinterpretation is one of the central pleasures of crime fiction.

Therefore, narrative-discursive reconstruction is not merely a storytelling technique; it is the mechanism through which hidden criminal reality becomes intelligible.

The expanded results provide clear answers to the research questions. Crime in criminal literary discourse is represented through: (a) direct and indirect linguistic encoding; (b) structured lexical-semantic fields; (c) pragmatic deviations that generate suspicion; (d) guided reader cognition and inferential activity; (e) narrative reconstruction of concealed past events.

Taken together, these findings reveal the linguistic landscape of crime fiction as a coordinated system of language, cognition, and narrative control.

DISCUSSION

The present study aimed to investigate how the phenomenon of crime is linguistically represented in criminal literary discourse through lexical-semantic, pragmatic, cognitive, and narrative mechanisms. The findings indicate that crime fiction should not be reduced to a popular genre built merely on suspense, entertainment, or sensational violence. Rather, it constitutes a highly organized discourse system in which hidden events are transformed into meaningful realities through language, interpretive sequencing, and reader participation. The results therefore allow crime fiction to be reconsidered not simply as storytelling about unlawful acts, but as a sophisticated communicative model of uncertainty, inference, and explanatory closure.

From a broader theoretical perspective, the findings demonstrate that literary crime is produced at the intersection of narrative form and discourse practice. A murder, theft, disappearance, or deception becomes narratively significant only when it is framed through

lexical choices, speech behavior, sequencing of clues, and reader cognition. In this sense, criminal literary discourse is not defined only by what happens in the story world, but by how the story organizes access to knowledge about what happened. This distinction is important because it moves the study of crime fiction beyond plot description toward a linguistically grounded explanation of genre functioning.

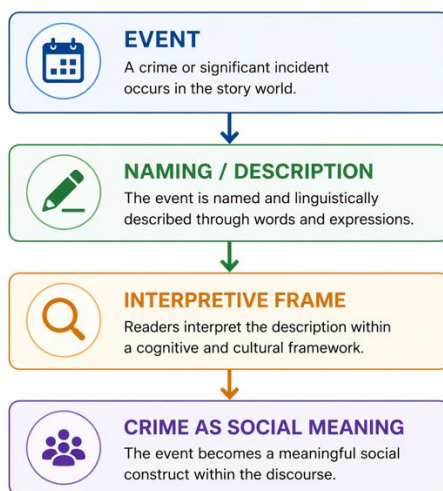
Crime as a Linguistically Mediated Social Reality

One of the most significant implications of the findings is that crime in literary texts is not encountered by readers as a transparent external fact. Instead, it is mediated through language from the earliest stages of the narrative. Before the criminal act is fully known, readers are commonly exposed to signals such as fear, unusual silence, contradiction, absence, secrecy, or emotional imbalance. These discourse cues gradually prepare the interpretive frame through which later revelations are understood.

This confirms the broader principle in discourse studies that realities are often socially and symbolically constructed through language. In criminal literary discourse, lexical items do not simply denote events; they classify them. For example, the same death may be described as an accident, murder, incident, tragedy, or punishment. Each label activates a different moral and cognitive schema. An accident implies chance, a murder implies agency and guilt, while a tragedy foregrounds suffering rather than culpability.

Thus, the language of crime fiction performs classificatory work. It guides readers toward particular judgments before the narrative has fully established the facts. Even descriptive adjectives such as cold-blooded, mysterious, brutal, calculated, or innocent-looking influence interpretive direction. Such framing demonstrates that readers do not merely discover crime; they are taught by discourse how to perceive it (See Figure 7):

Figure 7. From Event to Crime as Social Meaning



The present findings therefore support the claim that criminality in fiction is semiotically produced rather than neutrally narrated.

Suspicion as the Primary Narrative Force

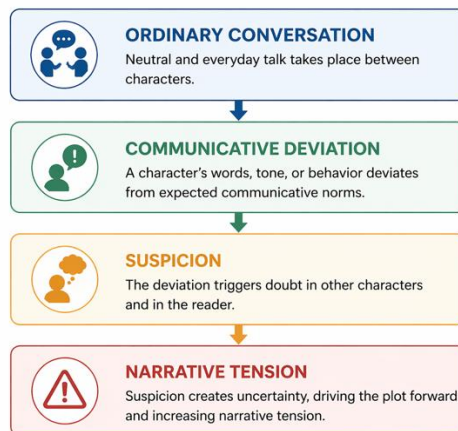
Traditional approaches often describe crime fiction in terms of mystery, investigation, or final revelation. However, the present findings suggest that these elements depend on a more fundamental mechanism: sustained suspicion. Suspicion is what keeps multiple possibilities alive, delays certainty, and motivates continued reading.

Importantly, suspicion is frequently generated not through spectacular acts of violence but through subtle disruptions in communication. A character pauses too long before answering, changes the subject, supplies unnecessary detail, forgets a previous statement, or reacts too intensely to a neutral remark. Such moments transform everyday language into narrative evidence.

This indicates that the genre’s tension often arises from pragmatics rather than action. The most dramatic scene in many crime narratives may not be the crime itself, but a dinner-table conversation in which one sentence appears slightly wrong. Readers become alert because linguistic

behavior suggests hidden intention (See Figure 8):

Figure 8. From Ordinary Conversation to Narrative Tension



This interpretation extends earlier structural accounts of detective fiction by emphasizing micro-level discourse signals. Suspense is not produced only by concealed facts, but by unstable communicative performance.

Another important implication is that suspicion is transferable. Once readers suspect one character, later neutral behavior may be reinterpreted negatively. Conversely, if a character appears sympathetic, suspicious behavior may initially be ignored. Crime fiction often manipulates these biases strategically.

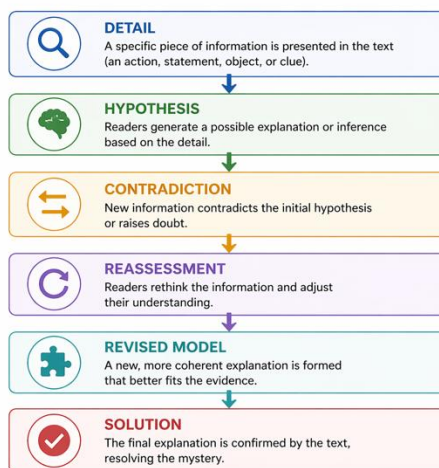
The Reader as Co-Investigator

The results also demonstrate that criminal literary

discourse assigns an unusually active role to readers. Unlike genres in which readers mainly await emotional resolution or future action, crime fiction requires continual interpretive labor. Readers collect clues, compare testimonies, infer motives, reconstruct chronology, and revise mistaken assumptions.

This makes reading an epistemic activity. The reader and the detective often perform parallel tasks, although from different positions. Both seek coherence from incomplete information. Both distinguish relevant from irrelevant details. Both may be misled by false appearances (See Figure 9):

Figure 9. From Detail to Solution: The Process of Reader Inference



The cognitive satisfaction associated with crime fiction likely emerges from this process. Resolution is rewarding because readers have mentally participated in constructing it. The final explanation reorganizes earlier confusion into order, allowing retrospective understanding.

The findings also suggest that readers are vulnerable to predictable inferential errors. They may overvalue dramatic clues, undervalue ordinary details, trust charismatic speakers, or assume that narrative prominence equals guilt. Crime fiction repeatedly exploits these cognitive habits. In doing so, the genre teaches readers to distrust first impressions and remain open to revision

Lexical-Semantic Architecture and Genre Recognition

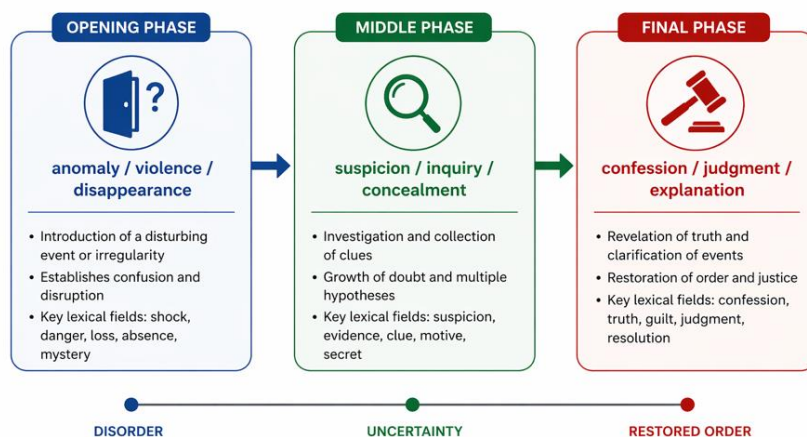
Another important contribution of the study concerns

lexical organization. The identified semantic fields – violence, concealment, suspicion, investigation, motive, and judgment – indicate that crime fiction possesses a relatively stable vocabulary architecture. These lexical clusters function as genre signals that help readers recognize the discourse world they have entered.

For example, words such as clue, witness, alibi, locked room, confession, motive, or trace immediately activate expectations associated with inquiry and hidden truth. Even before the central crime is fully introduced, readers may anticipate deception, revelation, and eventual explanation.

The findings further show that lexical fields often correspond to narrative phases (See Figure 10):

Figure 10. Lexical and Thematic Progression Across Narrative Phases



This sequential lexical movement suggests that vocabulary is not static decoration but a dynamic component of plot progression. Words shift as the epistemic state of the narrative changes.

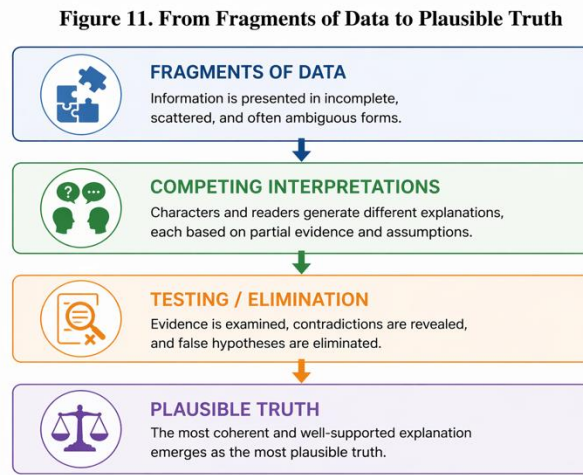
Moreover, lexical overlap increases interpretive richness. Terms such as guilt may refer to legal culpability, moral burden, or psychological self-awareness. Confession may function as legal evidence, emotional release, or manipulative deception. Such polysemy enables crime fiction to operate simultaneously on legal, moral, and psychological levels.

Crime Fiction as Epistemology under Conditions of Uncertainty

Perhaps the deepest implication of the study is that criminal literary discourse is fundamentally concerned with knowledge. Although crime fiction often appears moral on the surface, its central engine is frequently epistemological. The dominant questions are: What happened? Who knows the truth? Which testimony is reliable? Which signs are misleading? How can hidden reality be reconstructed?

This makes the genre especially resonant in modern contexts where information is fragmented, manipulated, or

politically contested. Crime fiction stages a universal problem of contemporary life: how to reason responsibly when certainty is unavailable (See Figure 11):



The narrative solution in crime fiction therefore symbolizes more than catching an offender. It symbolizes the human desire to convert confusion into intelligibility.

At the same time, some modern crime fiction complicates closure. Solutions may remain partial, morally uncomfortable, or psychologically unresolved. This suggests that contemporary forms of the genre increasingly reflect skepticism toward absolute truth and stable justice.

Implications for Literary Discourse Studies

The present study contributes to literary discourse analysis by demonstrating that crime fiction can be examined through an integrated framework combining semantics, pragmatics, cognition, and narratology. Many earlier studies focus primarily on genre history, famous detectives, ideological themes, or adaptation into film. While valuable, such approaches may overlook the linguistic mechanisms that make crime legible as crime.

The current findings indicate several productive directions for discourse-based criticism: (a) analysis of deception strategies in dialogue; (b) speech acts of accusation, denial, confession, and evasion; (c) lexical patterns across narrative stages; (d) discourse markers of guilt and innocence; (e) rhetorical management of sympathy and distrust; (f) cognitive framing of clues and evidence.

This broader model enables stronger interdisciplinary

dialogue between literary criticism, linguistics, psychology, and communication studies.

Cross-Cultural and Comparative Significance

Although the present discussion addresses criminal literary discourse in general terms, the findings also have comparative value. Different literary traditions may encode crime through distinct moral frameworks and lexical priorities.

In one tradition, crime may be represented mainly as violation of law (Azizov, 2025). In another, as betrayal of family honor. Elsewhere, it may appear as economic desperation, psychological trauma, or symptom of corrupt institutions. Likewise, concepts such as guilt, punishment, justice, revenge, and confession may carry different cultural meanings.

Comparative research involving English, Uzbek, Russian, French, or other traditions could therefore reveal how societies narrate responsibility, secrecy, and truth differently. Such studies would deepen understanding of the relationship between language, literature, and cultural ideology.

LIMITATIONS AND FUTURE RESEARCH

Several limitations should be acknowledged. First, the present study is primarily qualitative and interpretive rather than corpus-statistical. Second, crime fiction is internally

diverse: classical detective fiction, noir, legal thrillers, police procedurals, and psychological suspense narratives may employ different discourse strategies. Third, reader response may vary across cultural and educational contexts.

Future research may address these limitations through: (a) corpus-based frequency analysis of crime vocabulary; (b) computational tracking of suspicion markers in dialogue; (c) comparative multilingual discourse studies; (d) reader-response experiments on clue processing; (e) subgenre-specific analysis of noir, legal, or psychological crime fiction. Such work would empirically extend the theoretical model proposed here.

Overall, the discussion confirms that criminal literary discourse is best understood as a language-driven system that transforms concealed events into intelligible narratives. Through lexical framing, pragmatic deviation, reader inference, and structured revelation, crime fiction converts uncertainty into meaning.

Its enduring cultural power lies precisely in this transformation. Readers enter a world of ambiguity, deception, and disorder, yet leave with the experience – whether complete or partial – of recovered understanding.

CONCLUSION

To sum up, the present study has demonstrated that crime in criminal literary discourse is not represented merely as a narrative event, but as a complex linguistic and interpretive construct formed through lexical choices, pragmatic signals, cognitive inference, and narrative organization. More specifically, the analysis revealed that criminality often emerges gradually through discourse markers such as secrecy, contradiction, silence, suspicion, and delayed revelation. Therefore, crime fiction should be understood not only as a genre of entertainment, but also as a structured communicative system in which readers actively participate in the production of meaning. In this regard, the study confirms that literary crime is shaped as much by discourse strategies as by plot events themselves.

Furthermore, the findings showed that lexical-semantic fields such as violence, concealment, investigation, motive, guilt, and judgment play a central role in constructing the linguistic landscape of crime narratives. Notably, these semantic zones function dynamically across narrative stages: disorder and anomaly frequently

dominate openings, suspicion and inquiry characterize middle sections, while confession, explanation, and moral resolution become prominent in endings. As a result, vocabulary in criminal literary discourse cannot be regarded as accidental or decorative. Rather, it is strategically organized in accordance with narrative progression and reader expectations.

Moreover, another important conclusion concerns the cognitive role of readers. Crime fiction invites readers to perform investigative reasoning by interpreting clues, testing assumptions, rejecting false hypotheses, and reconstructing hidden events from fragmented evidence. In other words, readers do not simply consume the narrative but collaborate in producing its final meaning. Consequently, criminal literary discourse models broader epistemological processes through which individuals seek truth under conditions of uncertainty. This may explain why the genre continues to attract audiences across different historical and cultural contexts.

Finally, the study contributes to literary discourse research by integrating semantic, pragmatic, cognitive, and narratological perspectives into a unified analytical framework. Taken together, the findings demonstrate that crime fiction provides valuable material for understanding how language shapes perception, distributes suspicion, and organizes knowledge. Nevertheless, further inquiry remains necessary. Accordingly, future studies may extend these results through corpus-based methods, comparative cross-cultural analysis, and subgenre-specific research in order to deepen scholarly understanding of the linguistic mechanisms underlying criminal literary discourse.

REFERENCES

1. Azizov, S. (2025). Literary discourse as moral laboratory: Reimagining “crime” and “justice” through cognitive-linguistic frameworks. *Current Research Journal of Philological Sciences*, 6(12), 7–16. <https://doi.org/10.37547/philological-crjps-06-12-03>.
2. Azizov, S. (2026a). The metadiscursive and cognitive-pragmatic nature of literary discourse. *Light of Thought: Scientific and Methodological Journal*, 1, 217–223. (In Uzbek)
3. Azizov, S. (2026b). Interrelation of the categories of concept, frame, and scenario in multilingual literary

discourse Kokand SPI. Scientific Reports, 8(3), 45–53.
(In Uzbek)

4. Fairclough, N. (2013). *Critical discourse analysis: The critical study of language* (2nd ed.). Routledge.
5. Hühn, P. (1987). The detective as reader: Narrativity and reading concepts in detective fiction. *Poetics Today*, 8(3/4), 451–466.
6. Knight, S. (2004). *Crime fiction, 1800–2000: Detection, death, diversity*. Palgrave Macmillan.
7. Priestman, M. (Ed.). (2003). *The Cambridge companion to crime fiction*. Cambridge University Press.
8. Scaggs, J. (2005). *Crime fiction*. Routledge.
9. Thomas, R.R. (1999). *Detective fiction and the rise of forensic science*. Cambridge University Press.
10. Todorov, T. (1977). *The poetics of prose* (R.Howard, Transl.). Cornell University Press.
11. van Dijk, T.A. (2008). *Discourse and context: A sociocognitive approach*. Cambridge University Press.
12. Worthington, H. (2011). *Key concepts in crime fiction*. Palgrave Macmillan.